



ES-WDP Line

Automatic washers
and disinfectors



Pulse Healthcare Technology
House: 11/1, Shahid Minar Road
Kallyanpur, Dhaka-1216, Bangladesh.
Mobile: +8801708008061
e-mail: info@pht.com.bd
web: www.pht.com.bd

STERILIZATION



ES-WDP Line

Automatic washers and disinfectors



- Android operating system in the washer machine.
- Fingerprint access control with which is easier and faster for operators to enter the interface, and enhances the traceability.
- Cloud service that enable the real-time monitoring anytime and anywhere.
- Function of text message notification(SMS), informs the operator of running status, the cycle end, equipment faults and maintenance, etc...
- Function of voice intercom that enable a real-time communication between decontamination area and clean area, which provides an easy way to communicate for CSSD staff.



Android Operating System

The equipment implements Android operating system, enabling the real-time monitoring of the machine. The running status and record can be delivered to traceability system by wire or wireless connector. In this way, the washer disinfector is monitored in real time.



Finger Print Access Control

Users can enter operating interface by finger print ID or password. By using finger print ID technology, the equipment get physiological feature record of operators, so it can trace the responsibility of operators.



Video Training

Users can receive operation training and infection control knowledge, etc... from the machine.



Text Message Notification (SMS)

The equipment operating staff can get the information about running status of machine by text message. (including running information and fault information)



Various Connectivity to Network

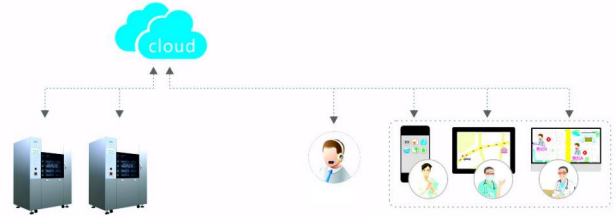
RJ 45 wire connector, WIFI module, 3G network module and USB data interface.





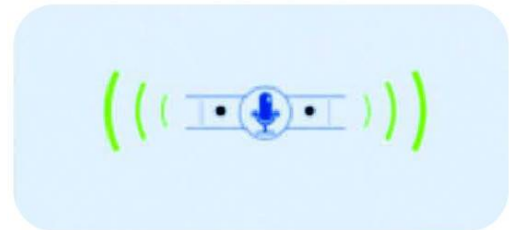
"Cloud" Service

After the network connection, the equipment can backup data into "cloud service" on Internet.
Once there is any fault, the machine, after repaired, can synchronize data from "cloud".
Any operators who are authorized can monitor the running of machine anytime and anywhere.
Main functions of "Cloud": Cloud backup, Cloud recovery and Cloud curve.



Voice Intercom System

Voice intercom system which enables the real-time communication between decontamination area and clean area.
The function of "voice filter" can identify voice between staff and environment, so that the high quality voice is guaranteed.



Double Synchronized High-Definition LCD

10,4 inch LCD with image resolution 800x600;
User friendly interface.



Standard Spare Parts

All major parts sourced from professional manufacturers.





ES-WDP500/550



STERILIZATION

Automatic washers and disinfectors

Cod. **ES-WDP500** - 500L

Cod. **ES-WDP550** - 550L

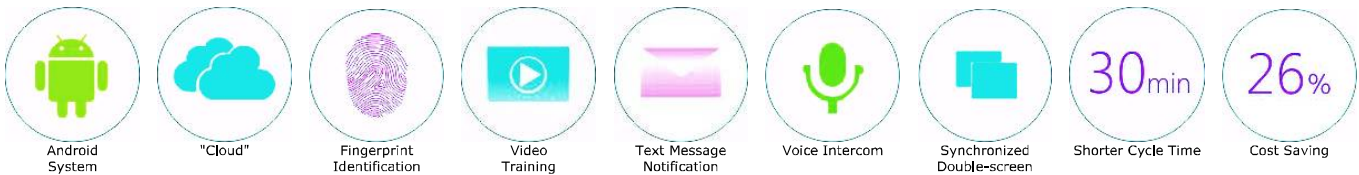


Decontamination Area Side

Loudspeaker, 10.4 inch LCD Display, Voice Intercom, Touch Panel, Fingerprint Access Control, Automatic Sliding Door, Chemical Dosing Compartment

Checking, Packaging & Sterilization Area Side

Loudspeaker, 10.4 inch LCD Display, Voice Intercom, Collagen Printer, USB Connector

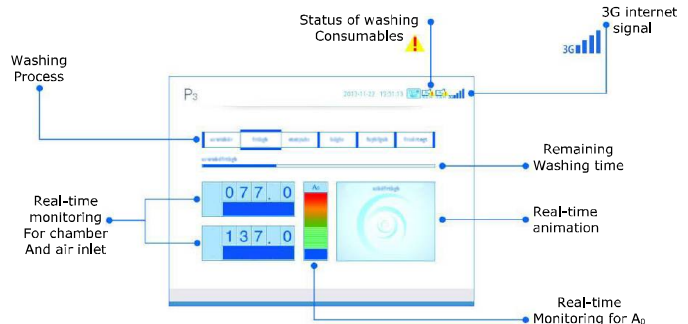


Test Washing Effect

Tested washer & disinfectors washing common surgical instruments, dental drill, anaesthesia & breathing tubes, humidification bottles, and baby feeding bottles. The result of absorbance values of residual protein pollutant is less than 0.020, and the approval rate is 100%

Disinfection Program

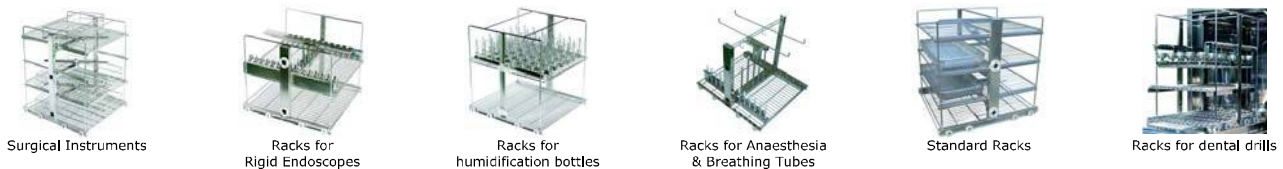
Machines according to sterilization technical standards and Programmes, including low temperature disinfection, high temperature disinfection and chemical disinfection.



Technical Features

Model		ES-WDP500	ES-WDP550
Capacity		500 L	550 L
Temperature of heat sterilization		0 ~ 98°C	0 ~ 98°C
Water Consumption Cycle		30 L	40 L
Preset Programs		6	6
Material	Tube system	316 stainless steel	316 stainless steel
	Chamber	304 stainless steel	304 stainless steel
Overall dimension		1870x1340x1026 mm	1870x1340x1026 mm
Power supply		AC 380V 50Hz	AC 380V 50Hz
Power		35 Kw	35 Kw

Racks for Full Automatic Washer Machine





ES-WDP320/360



Automatic washers and disinfectors

Cod. **ES-WDP320** - 320L

Cod. **ES-WDP360** - 360L



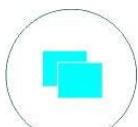
High Efficiency



Small Footprint



Large Capacity



Synchronized Double-Screen

Test Washing Effect

Tested washer & disinfectors washing common surgical instruments, dental drill, anaesthesia & breathing tubes, humidification bottles, and baby feeding bottles.

The result of absorbance values of residual protein pollutant is less than 0.020, and the approval rate is 100%

Disinfection Program

Machines according to sterilization technical standards and Programmes, including low temperature disinfection, high temperature disinfection and chemical disinfection.



Technical Features

Model	ES-WDP320	ES-WDP360
Capacity	320 L	360 L
Temperature of heat sterilization	20 ~ 98°C	20 ~ 98°C
Water Consumption Cycle	15 L	15 L
Preset Programs	6	6
Material	Tube system	316 stainless steel
	Chamber	304 stainless steel
Overall dimension	1860x700x700 mm	1865x700x700 mm
Basket	8	10
Power supply	AC 380V 50Hz	AC 380V 50Hz
Power	17 Kw	17 Kw

Racks for Full Automatic Washer Machine



Surgical Instruments



Racks for Rigid Endoscopes



Racks for humidification bottles



Racks for Anaesthesia & Breathing Tubes

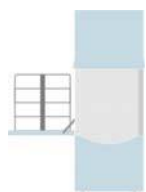


Standard Racks



Racks for dental drills

Operation Instruction



Load items in decontamination area



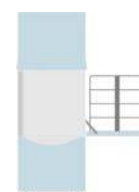
Close front door in decontamination area



Washing and disinfecting



Open back door in clean area



Unload items in clean area





Cod. **ES-WDP200** - 200L

0.5m²

Small Footprint

The footprint is 0,5m², which is suitable for compact environment, such as operation room and CSSD.

1.4x

Large Capacity

Instruments basket with dimension 485x285x60 mm is 1.4 times bigger than standard basket

15L

High Efficiency

15L water for each cycle;
30-50ml washing enzyme and
20-30ml oil for each cycle.

Washing & Disinfection Result

The device is equipped with high-speed elastic connector, which can reduce water pressure loss and improve the washing effect

Matrix Printer

The printed record can be kept for over 3 years with the technology of collagen printer

Synchronized Double-screen

Double 4 inch LCD synchronized display, convenient for operators in 2 areas. In decontamination area, operator can run the machine, and meantime, operators in clean area can monitor the running status of machine and get the printed record.

Standard Spare Parts

Standard spare parts and pump of European origin.





ES-WDP60



Benchtop Automatic washers and disinfectors

Cod. **ES-WDP60** - 60L

Product Features

Benchtop; Space-saving
Small Size and it can be easily moved
Shorter cycle time and higher efficiency

Range of Application

Surgical instruments, dental Equipment,
endoscopes, etc....

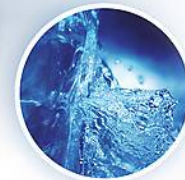
Capacity

Instruments from 1 operation and 12 dental drills



Technical Features

Model	ES-WDP60
Capacity	60L
Preset Programs	P1 : Standard Washing (28min) P2 : Quick Washing (11min)
Dimensions	570 x 470 x 500 mm
Power supply	AC220V 50Hz



Pulse Healthcare Technology
House: 11/1, Shahid Minar Road
Kallyanpur, Dhaka-1216, Bangladesh.
Mobile: +8801708008061
e-mail: info@pht.com.bd
web: www.pht.com.bd



ESSE3 srl, Via Garibaldi 30
14022 Castelnuovo D.B. (AT)
Tel +39 011 99 27 706
Fax +39 011 99 27 506
e-mail esse3@chierinet.it
web: www.esse3-medical.com

