



ES-PXD1

Analogic dental
x-ray panoramic unit



With Ceph



Pulse Healthcare Technology
House: 11/1, Shahid Minar Road
Kallyanpur, Dhaka-1216, Bangladesh.
Mobile: +8801708008061
e-mail: info@pht.com.bd
web: www.pht.com.bd

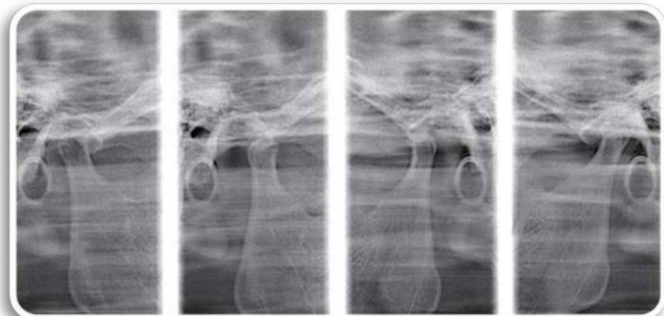
DENTISTRY



ES-PXD1



Analogic dental x-ray panoramic unit



Model	ES-PXD1
Type	Oral high frequency panoramic X-ray machine
Tube voltage	60-88 KV
Tube current	Panoramic photography 4~10mA Skull photography(Ceph)12mA
Photography mode	Manual / automatic setting
Rectifier mode	High frequency DC frequency 60~80 kHz
Power Supply	AC220V/110V 50/60Hz 2.5kVA
X-ray tube	Toshiba D-054SB
focus	0.5mm x 0.5mm
Total filtration	≥ 2.5mmAl
Magnification	1.30 - 1.25 times
Panoramic photography	Adult / child Adult panoramic 15 seconds Children's panoramic 12 seconds
Exposure Time	CEPH 0.2-2.5 seconds (2.4-30mA.s) Temporomandibular joint 3x4 seconds
Temporomandibular joint photography	Four-segment photography
Lifting method	Electric lift
Dimensions	1880 x 881 x 2045 mm
Weight	180 kg



Pulse Healthcare Technology
 House: 11/1, Shahid Minar Road
 Kallyanpur, Dhaka-1216, Bangladesh.
 Mobile: +8801708008061
 e-mail: info@pht.com.bd
 web: www.pht.com.bd



ESSE3 srl, Via Garibaldi 30
 14022 Castelnovo D.B. (AT)
 Tel +39 011 99 27 706
 Fax +39 011 99 27 506
 e-mail: esse3@chierinet.it
 web: www.esse3.dreamgest.com

