



VOV 600

Portable Fundus camera



Pulse Healthcare Technology
House: 11/1, Shahid Minar Road
Kallyanpur, Dhaka-1216, Bangladesh.
Mobile: +8801708008061
e-mail: info@pht.com.bd
web: www.pht.com.bd

OPHTHALMOLOGY / ENT



VOV 600

Portable Fundus camera



Characteristics

This product is developed is a portable medical camera for fundus imaging, diagnosis and especially for fundus disease screening. It's compact, easy to obtain high definition fundus image. It can be conveniently applied to rapid screening, out diagnosis, bedside diagnosis and remote medical treatment, etc.

- High definition and stable image
- Non-mydratic and large field of view
- Easy one-handed operation and excellent portability
- Large data service and a variety of image acquisition mode

Features

Images real-time display, one button magnifying

Non-mydratic and high definition imaging.

Micro SD memory card up to 80,000 images

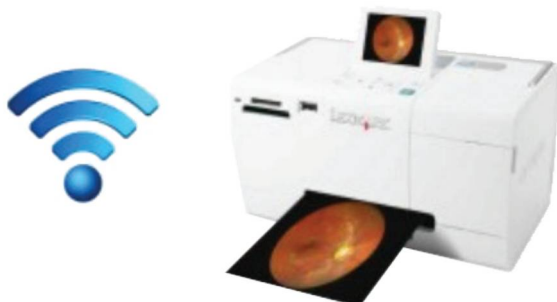
USB and WiFi connection

Low weight 450g , movable and portable

Rechargeable battery provides up to more than 4 hours of continuous operation.

Optional imaging modules for examination: posterior ophthalmoscope , anterior segment, ophthalmoscope, otoscope, rhinoscope, laryngoscope and dermatoscope.

With WIFI connecting to the computer or printer





VOV 600



Portable Fundus camera

Parameters

Model: VOV 600

FOV: 40°

Minimum pupil: 3mm

Refractive compensation: -20D~+20D

Light source: White LED/IR

Image resolution: 1920×1080

Focus Mode: Manual

Screen: 3.5" color

Power: ≤6VA

Storage: 8GB MicroSD card

Power supply: 3.7VLithium Battery

Interface: Mini USB/Wifi

Net Weight: 450g(Typical)

Gross Weight: 2.5kg

Size: 160mm*90mm*190mm

Packing size: 360mm*310mm*160mm





VOV 600

Portable Fundus camera



Optional accessory

With his adaptor (optional) can be used with any slit lamp to get more clear fundus images.



Pulse Healthcare Technology
 House: 11/1, Shahid Minar Road
 Kallyanpur, Dhaka-1216, Bangladesh.
 Mobile: +8801708008061
 e-mail: info@pht.com.bd
 web: www.pht.com.bd



ESSE3 Via Garibaldi 30
 14022 Castelnuovo D.B. (AT)
 Tel +39 011 99 27 706
 Fax +39 011 99 27 506
 e-mail esse3@chierinet.it
 web: www.esse3-medical.com

