



# MOcean 3000

## Optical Coherence Tomography



**Pulse Healthcare Technology**  
House: 11/1, Shahid Minar Road  
Kallyanpur, Dhaka-1216, Bangladesh.  
Mobile: +8801708008061  
e-mail: [info@pht.com.bd](mailto:info@pht.com.bd)  
web: [www.pht.com.bd](http://www.pht.com.bd)

OPHTHALMOLOGY / ENT



# MOcean 3000



## Optical Coherence Tomography



Equipped with LSO(Line Scanning Ophthalmoscopy), Mocean 3000 provides simultaneously high quality fundus imaging, which is easy for physicians to localize the lesion.

- Macular HD Line
- Macular Six-Line Radial
- Macular Cube
- Glaucoma(Macular)
- Glaucoma(Disc)
- Informative Report
- Anterior HD Line
- Anterior Six -Line Radial
- En-Face Analysis
- Network System

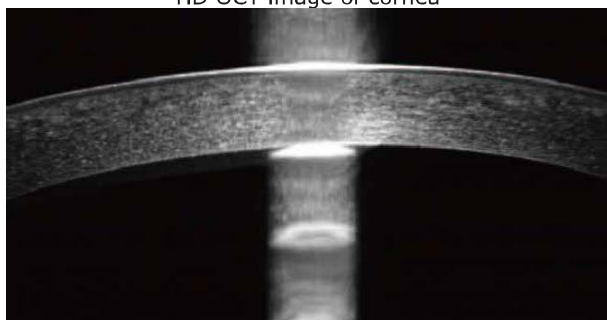
- HD wildfield image averaging (up to 50 images)
- 45° widefield real-time SLO fundus image
- Complete scanning of retina, RNFL & ganglion cell volume analysis, and anterior segment
- Progression analysis for glaucoma progression detection
- Auto search signal with one press
- Streamlined user interface



## ANTERIOR SEGMENT

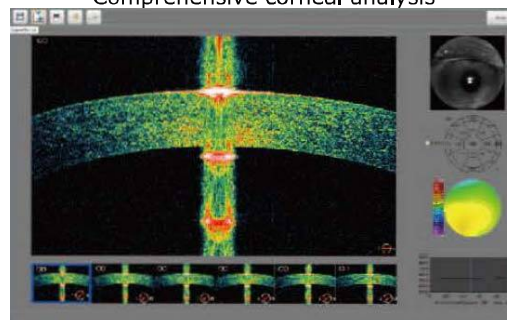
### Anterior HD line

HD OCT image of cornea



### Anterior segment six radial line

Comprehensive corneal analysis

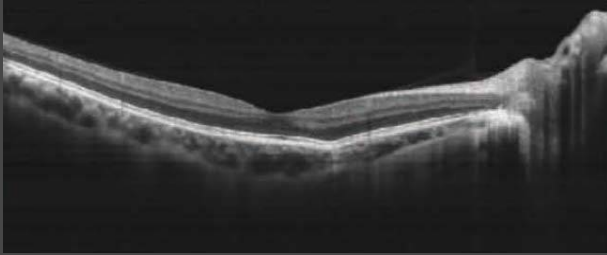


#### Software analysis

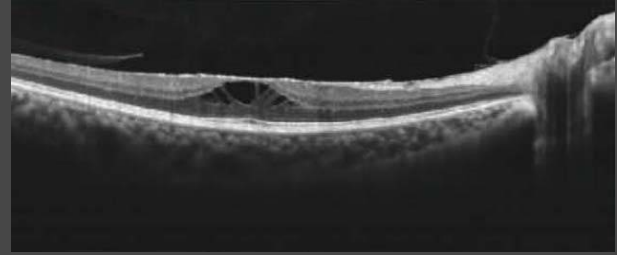
- Corneal pachymetry
- Corneal thickness map
- Corneal thickness profile

## IMAGE GALLERY

Normal retina



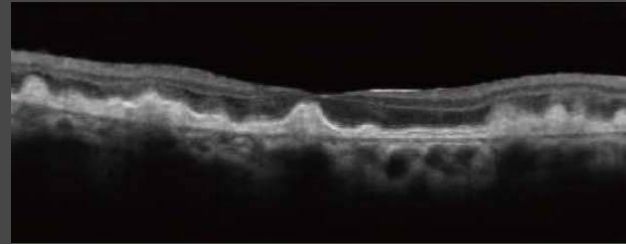
Macular edema



Serous detachment of the neuroepithelium



CNV



## MACULA

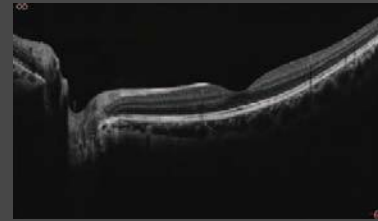
### Macular HD line

HD OCT image with up to 50 times averaging for the highest image quality

\* Scanning width is swichable between 6mm and 12mm



Scanning width 6mm



Scanning width 12mm

### Macular six-line radial

HD OCT image with 5 times averaging, retinal analysis and ganglion cell volume analysis

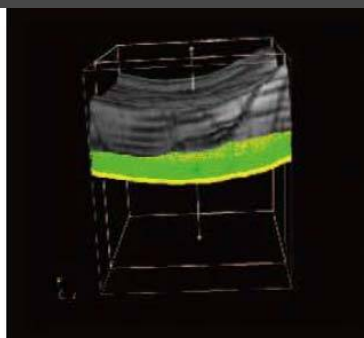
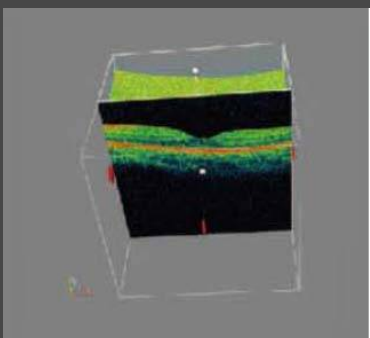
#### Software analysis

- ILM-RPE thickness nine zone map
- ILM-RPE thickness map
- ILM-RPE thickness profile
- NFL+GCL+IPL nine zone map
- NFL+GCL+IPL thickness map
- NFL+GCL+IPL thickness profile



### Macular 3D

Providing precise quantitative analysis, 3D and C-scan analysis



#### Software analysis

- ILM-RPE thickness nine zone map
- ILM-RPE thickness map
- ILM-RPE volume
- NFL+GCL+IPL thickness map
- NFL+GCL+IPL volume figure
- NFL+GCL+IPL nine zone map
- 3D analysis
- C-scan analysis



## Technical Features

### OCT IMAGING

<b>Methodology</b>	Spectral Domain Oct
<b>Optical Source</b>	Super luminescent diode(SLD),840nm
<b>Scan speed</b>	36000 A-Scan/s
<b>Axial Resolution (optical)</b>	5 microns(optical)2.7 microns(digital)
<b>Tranverse resolution</b>	15 microns(optional),3 microns (digital)
<b>A-Scan depth</b>	2.3MM
<b>Diopter range</b>	-20D to +20D
<b>Scan patterns</b>	Macular: HD line scan (6mm or 12mm), 3D scan(6mm x 6mm) Anterior:HD Line scan (6mm),6-line radial scan

### FUNDUS IMAGING

<b>Methodology</b>	Line scanning ophthalmoscopy(LSO)
<b>Frame rate</b>	10fps
<b>Minimum pupil diameter</b>	3.0mm
<b>Field of view</b>	47 degrees

### SOFTWARE ANALYSIS

<b>Macula</b>	Retina thickness analysis,3D view, En-face analysis, Progression analysis
<b>Glaucoma</b>	RNFL analysis, Ganglion cell analysis, Cup-disk analysis, progression analysis, OU comparative analysis
<b>Anterior segment</b>	Manual measurement, Corneal thickness analysis
<b>Others</b>	DICOM conformance, Remote viewer software available

### ELECTRICAL AND PHYSICAL

<b>Weight</b>	29kg
<b>Dimension</b>	450x250x450 mm
<b>Source voltage</b>	AC 100-240V
<b>Frequency</b>	50Hz-60Hz
<b>Power input</b>	90VA



#### Pulse Healthcare Technology

House: 11/1, Shahid Minar Road  
Kallyanpur, Dhaka-1216, Bangladesh.  
Mobile: +8801708008061  
e-mail: info@pht.com.bd  
web: www.pht.com.bd



ESSE3 srl, Via Garibaldi 30  
14022 Castelnuovo D.B. (AT)  
Tel +39 011 99 27 706  
Fax +39 011 99 27 506  
e-mail: esse3@chiertnet.it  
web: www.esse3-medical.com

