



ESMD-320W

Portable Ultrasound Biomicroscope



OPHTHALMOLOGY / ENT



Pulse Healthcare Technology
House: 11/1, Shahid Minar Road
Kallyanpur, Dhaka-1216, Bangladesh.
Mobile: +8801708008061
e-mail: info@pht.com.bd
web: www.pht.com.bd



ESMD-320W

Portable Ultrasound Biomicroscope



Cod. **ESMD-320W**

- The frequency is 50MHz, with two kinds of field of view, which are 6.7mm×5.3mm and 13.5mm×10.6mm.
- When the probe scans continuously for more than five minutes, the default setup is to stop scanning, but the operator can cancel the setup.
- The probe automatically stops scanning when it is too close to the cornea.
- Simple operation that meet the habit of doctor.
- Real-time image acquisition, the operators can capture single image and acquire dynamic video.
- The images and texts are stored together as a medical record.
- Image processing and measurement
- Printing of image report.
- Medical records storage and retrieval.
- Mass storage.



Cod. **720/00**
Optional Trolley

Technical Features

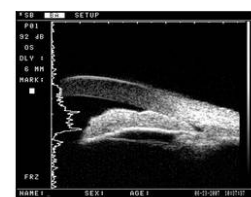
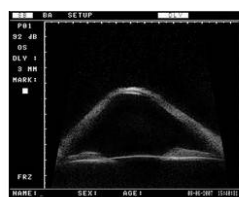
Ultrasonic Frequency	50MHz
Gain Control	≥105dB
Display Resolution	1280 ×1024 or 1024 × 768
Gray Scale	256
Delay	3 mm - 12mm
Field of View (depth × width)	wide view (10.6mm × 13.5mm), normal (5.3mm × 6.7mm)
Scanning Method	sector scan
Resolution	Axial: 50um; lateral: 100um
Accuracy of Geometrical Position	axial: ≤10%; lateral: ≤15%
Display Mode	B
Image Buffer Space	≥100images
Screen Measurement	distance, angle, area and so on
Communication Interface	USB
Image Format	JPG, BMP
Film Format	AVI
Footswitch	Start\Freeze and Capture image
Image Processing	Brightness and contrast adjustment, γ correction, color change, color reversal, amplification, text annotation
Print Report	Observation, image content can be selected to print
Operation System	Windows XP
Hard Disk Capacity	more than 80GB
Monitor Resolution	1280 x1024

Optional

20MHz B-Scan probe on ESMD-320W
 Probe Type: 20MHz B-Scan,
 Scan Mode: Sector Scan,
 Refresh rate: 10 frames per second
 Grayscale: 256 Levels, Standard Field: 42mm/53°

Pulse Healthcare Technology

House: 11/1, Shahid Minar Road
 Kallyanpur, Dhaka-1216, Bangladesh.
 Mobile: +8801708008061
 e-mail: info@pht.com.bd
 web: www.pht.com.bd



ESSE3 srl, Via Garibaldi 30
 14022 Castelnuovo D.B. (AT)
 Tel +39 011 99 27 706
 Fax +39 011 99 27 506
 e-mail esse3@chierinet.it
 web: www.esse3-medical.com

