



# CRK-7000

Auto Ref / Keratometer  
CRK -7000



**Pulse Healthcare Technology**  
House: 11/1, Shahid Minar Road  
Kallyanpur, Dhaka-1216, Bangladesh.  
Mobile: +8801708008061  
e-mail: [info@pht.com.bd](mailto:info@pht.com.bd)  
web: [www.pht.com.bd](http://www.pht.com.bd)



# CRK - 7000

## Designed For More Reliable And Accurate Refraction

The CRK-7000 helps you with more precise measurement of refractive power and corneal curvature. Its various functions make your practice more efficient and improve patient comfort.

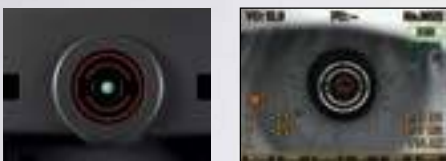
### Reliable Measurement Accuracy

#### Optimal Optical System

Unique optic technology that offers fast and accurate reading and enhances the reliability of the measurement results.

#### Keratometry Measurement

The reliable keratometry of CRK-7000 using 2 mire ring and 2 LEDs provides corneal curvature radius and corneal refractive power.



#### Auto Start

With auto start mode, the CRK-7000 maintain fogging throughout multiple measurements that makes ideal for use with children or other patients who find it difficult to fixate.



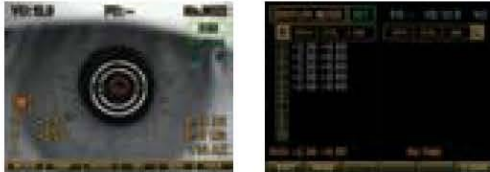
**Pulse Healthcare Technology**  
House: 11/1, Shahid Minar Road  
Kallyanpur, Dhaka-1216, Bangladesh.  
Mobile: +8801708008061  
e-mail: [info@pht.com.bd](mailto:info@pht.com.bd)  
web: [www.pht.com.bd](http://www.pht.com.bd)



## More Advanced Functions

### Wider Measurement Range

CRK-7000 provides more diagnostic information and superior performance with wide possible range of refraction and keratometry measurements.



### CLBC(Contact Lens Base Curvature)

Measuring the base curvature of contact lens is useful in fitting contact lens patients.



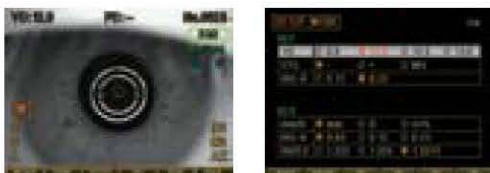
### PD(Pupillary Distance)

PD is automatically measured after checking both eyes. It saves your valuable time.



### VD(Vertex Distance)

VD selection function(0, 12, 13.5, 15mm) offers more accurate measurement data.



### Pupil and Iris Size Measurement

CRK-7000 can measure the size of pupil, cornea and iris under 14mm in diameter by freezing the image.



## More Convenient To Use

### 5.7 inch Color LCD

5.7 inch Color LCD displays clear images and its image processing chip allows to the LCD to show real time images.



### Focusing Indicator

The focusing indicator appears on the screen when the eye is the optimal position.



### Convenient One-Touch Lock

With the convenient one-touch lock, the main body can easily be fixed to the base.



### High Speed Printer

The High speed printer print out the final measurement results in 3 seconds. The printing paper can be changed easily by adopting the one-touch paper holder.



### Automatic Power-Off

The system automatically shuts off by itself to conserve energy and prevent overheating.

### Realization of a Total Refraction System

CRK-3100 can be connected to refraction systems easily and simply.



# CRK-7000



**ESSE3** srl, Via Garibaldi 30  
 14022 Castelnovo D.B. (AT)  
 Tel +39 011 99 27 706  
 Fax +39 011 99 27 506  
 e-mail [esse3@chierinet.it](mailto:esse3@chierinet.it)  
 web: [www.esse3-medical.com](http://www.esse3-medical.com)



# Auto Ref / Keratometer

## Specification

### Measurement Mode

K/R Mode	Continuous Keratometry & Refractometry
REF Mode	Refractometry
KER Mode	Keratometry
CLBC Mode	Contact Lens Base Curve Measurement

### Refractometry

VD	0.0, 12.0, 13.5, 15.0mm
Sphere(SPH)	-20.00~+20.00D (VD=12mm) (Increments : 0.12 / 0.25)
Cylinder(CYL)	0.00~±10.00D (Increments : 0.12 / 0.25)
Axis(AX)	0~180° (Increments : 1°)
Cylinder From	-, +, ±
Pupil Distance	10~85mm
Minimum Pupil Diameter	Ø2.0mm

### Keratometry

Radius of Curvature	5~10.2mm
Corneal Power	33.00~67.50D (Increments : 0.05 / 0.12 / 0.25D) (n=1.3375)
Corneal Astigmatism	0.00~-15.00D (Increments : 0.05 / 0.12 / 0.25D)
Axis(AX)	0~180° (Increments : 1°)
Pupil, Iris Diameter	2.0~14.0mm (Increments : 0.1mm)
Memory Data	10 measurements for each data

### Others

Internal Printer	Thermal Line Printer
Power Saving	Automatic Switch-Off (5min)
Display	5.7inch Color TFT LCD
Power Supply	AC100~240V, 50/60Hz
Dimension	275(W) X 510(D) X 450(H)mm / 20kg

Designs and details can be changed without prior notice for improvements.



**Pulse Healthcare Technology**  
 House: 11/1, Shahid Minar Road  
 Kallyanpur, Dhaka-1216, Bangladesh.  
 Mobile: +8801708008061  
 e-mail: [info@pht.com.bd](mailto:info@pht.com.bd)  
 web: [www.pht.com.bd](http://www.pht.com.bd)