



ESS-250KE Line

Manual door steam sterilizers



STERILIZATION



Pulse Healthcare Technology
House: 11/1, Shahid Minar Road
Kallyanpur, Dhaka-1216, Bangladesh.
Mobile: +8801708008061
e-mail: info@pht.com.bd
web: www.pht.com.bd



ESS-250KE Line



Manual door Steam Sterilizers

- 304 SS square chamber
- Manual opening door
- LCD display with touch screen function
- Built-in thermal printer
- Vacuum function with built-in vacuum pump
- External air compressor
- 11 pre-set programs (including B&D and test vacuum)
+ 9 open programs
- Memory 20000 cycles



Main Features

- **Pulse Vacuum Sterilizer (Standard)**

ESS-250KE series are a high temperature sterilizer which is researched and developed according to the latest requirements of medical institution and CSSD. It is designed and manufactured by referring to latest relative state standards to meet all sterilizing requirements and CSSD. The design of chamber accords with state GB 1502011, GB8599-2008 and European EN285 standard.

- **Strict and standard manufacture process for product main body.**

ESS-250KE pulse vacuum sterilizer is welded by welding robot to guarantee the normalization and uniformity of the main body manufacture.

- **No welding part on chamber wall.**

ESS-250KE pulse vacuum sterilizer has none welding part or bolt in the chamber which effectively protects parcels to be sterilized. The chamber silicon rubber pad which is used to protect the chamber inner wall extends service life.

- **Reliable and durable main body.**

The main body of ESS-250KE pulse vacuum sterilizer is designed according to professional analytical method. The modern high-emulation software ANSYS is used for main body model simulation design. Design service life: 10 years (or 20000 times sterilization).

- **Reasonable sealing structure.**

ESS-250KE pulse vacuum sterilizer adopts durable circular hollow sealing ring which is driven by compressed air.

- **Intelligent pressure controller between the chamber and jacket.**

ESS-250KE pulse vacuum sterilizer adopts pressure controller to guarantee steam pressure and quality.

- **Unique vacuum noise-reduction device.**

ESS-250KE series sterilizer equipped with LNS low-noise and water-saving vacuum system to reduce the operation noise.

- **Humanized operation system**

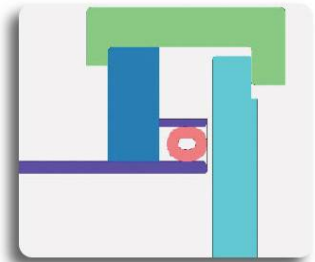
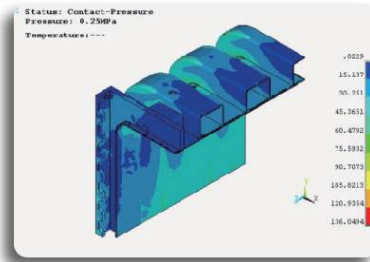
To meet user's need on unloading side, ESS-250KE pulse vacuum sterilizer adopts double-screen structure. Both loading and unloading sides have a screen to display sterilizer running status and alarming information.

- **Reasonable pipeline layout that realizes single-side repair.**

ESS-250KE pulse vacuum sterilizer pipeline realizes single-side repair so the sterilizer can be installed against the wall. Also two sterilizers can use same repair space to save installation space.

- **Multiple sterilizing programs.**

Compare with traditional sterilizer, ESS-250KE series sterilizer equipped with functions of steam pressure detector and steam saturation measurement. Also the sterilizer has multiple sterilizing and testing programs such as PCD, rapid, rubber and custom, etc...



S.S. health-class pipe imported pneumatic valve



Vacuum pump



Loading by basket



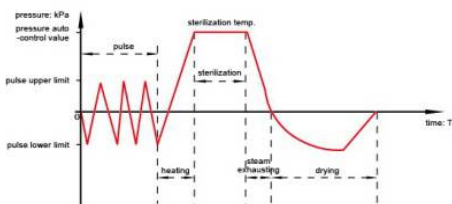
Loading by sterile box

Technical Features

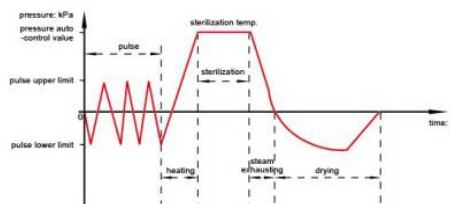
- Scientific parameters, wide scope of application

	Chamber	Jacket
Designed pressure	-0,1/0,3MPa	0,3MPa
Designed temperature	144°C	144°C
Working pressure	0,25MPa	0,25MPa
Working temperature	139°C	139°C
Opening pressure of safety valve	0,28	0,28

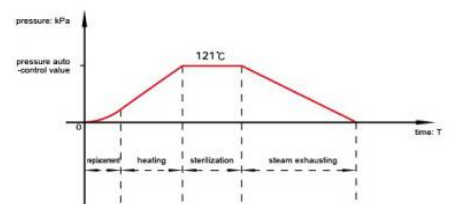
- Standard Cycles



Vacuum program
For dressing instrument, aseptic clothes, utensils

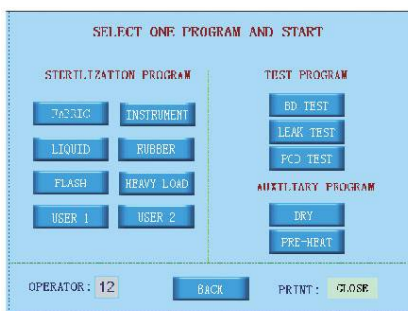


B-D Test program



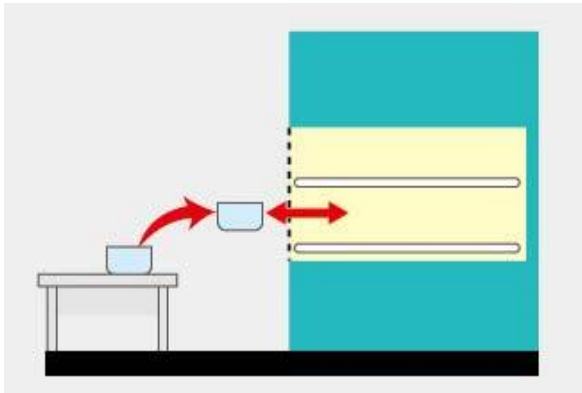
Liquid program
For less liquid items

- Interface

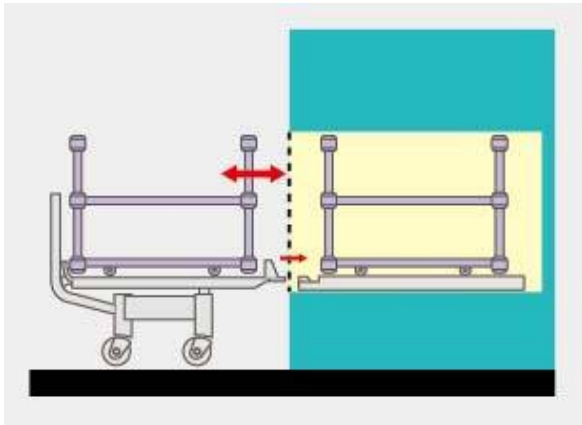




• Loading method



Loading shelf



Loading trolley



Cod.	ESS-250KE/140	ESS-250KE/240	ESS-250KE/350	ESS-250KE/650
Volume	146 L	241 L	352 L	655 L
Net weight	525 kg	660 kg	880 kg	1270 kg
Control power	220/0,5 V/Kw	220/0,5 V/Kw	220/0,5 V/Kw	220/0,5 V/Kw
Motive power	380/16,5 V/Kw	380/21,5 V/Kw	380/21,5 V/Kw	380/42,5 V/Kw
Chamber dim. WxHxD	420x420x830mm	600x600x670mm	600x600x980mm	610x910x1180mm
Overall dim. WxHxD	880x1730x1166mm	1286x1848x1000mm	1286x1848x1310mm	1286x1980x1522mm
Loading	Loading shelf	Loading shelf	Loading shelf	Loading trolley
Standard	Single door, built-in electric steam generator			
Optional	External softener			



Pulse Healthcare Technology
 House: 11/1, Shahid Minar Road
 Kallyanpur, Dhaka-1216, Bangladesh.
 Mobile: +8801708008061
 e-mail: info@pht.com.bd
 web: www.pht.com.bd



ESSE3 srl, Via Garibaldi 30
 14022 Castelnuovo D.B. (AT)
 Tel +39 011 99 27 706
 Fax +39 011 99 27 506
 e-mail esse3@chierinet.it
 web: www.esse3-medical.com

