



DATA SHEET

Model: MD30

CMOS cameras for microscopy



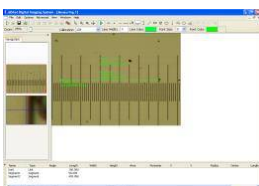
Sensor	1/2" CMOS 3.2 Mpix
Pixels	3.2µm x 3.2µm
Digital	Color 10 Bit
ROI	Si
Dynamic range	43dB
Read out noise	12 e-
Exposure	6ms~650 ms. Auto
Max. Frame rate	7.5fps 1360x1024

Output	USB2.0
Type of connection	C-mount
IR cut-off filter	Standard: IR cut-off filter integrated in C-mount
Alimentation	USB2.0
Dimension / Weight	24x14x8 cm / 750g
USB cable	Included (300 cm)
Software	Image Analysis Software ^{pro} - Included
Condition of utilization	Temperature +5°C...+55°C / Humidity 5%...80%
Operating system	Microsoft Windows XP,2000,Vista, Win7 (32 or 64 bit)



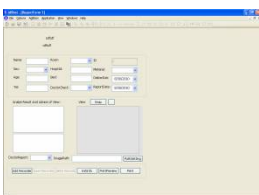
IMAGE CAPTURE

Live preview, Automatic/Manual capturing, Image process, Dynamic image analysis, Auto exposure, White balance, Parameters setting



MEASURING

Linear measuring, diameter, angle, Area.



REPORT

Basic report system, Data export, Report printing, Report query, Editable data base

IMAGE SYNTHESIS

Support multi-image mosaic, Disorderly automatic slicing technology



Pulse Healthcare Technology
 House: 11/1, Shahid Minar Road
 Kallyanpur, Dhaka-1216, Bangladesh.
 Mobile: +8801708008061
 e-mail: info@pht.com.bd
 web: www.pht.com.bd



ESSE3 srl, Via Garibaldi 30
 14022 Castelnuovo D.B. (AT)
 Tel +39 011 99 27 706
 Fax +39 011 99 27 506
 e-mail esse3@chierinet.it
 web: www.esse3-medical.com

