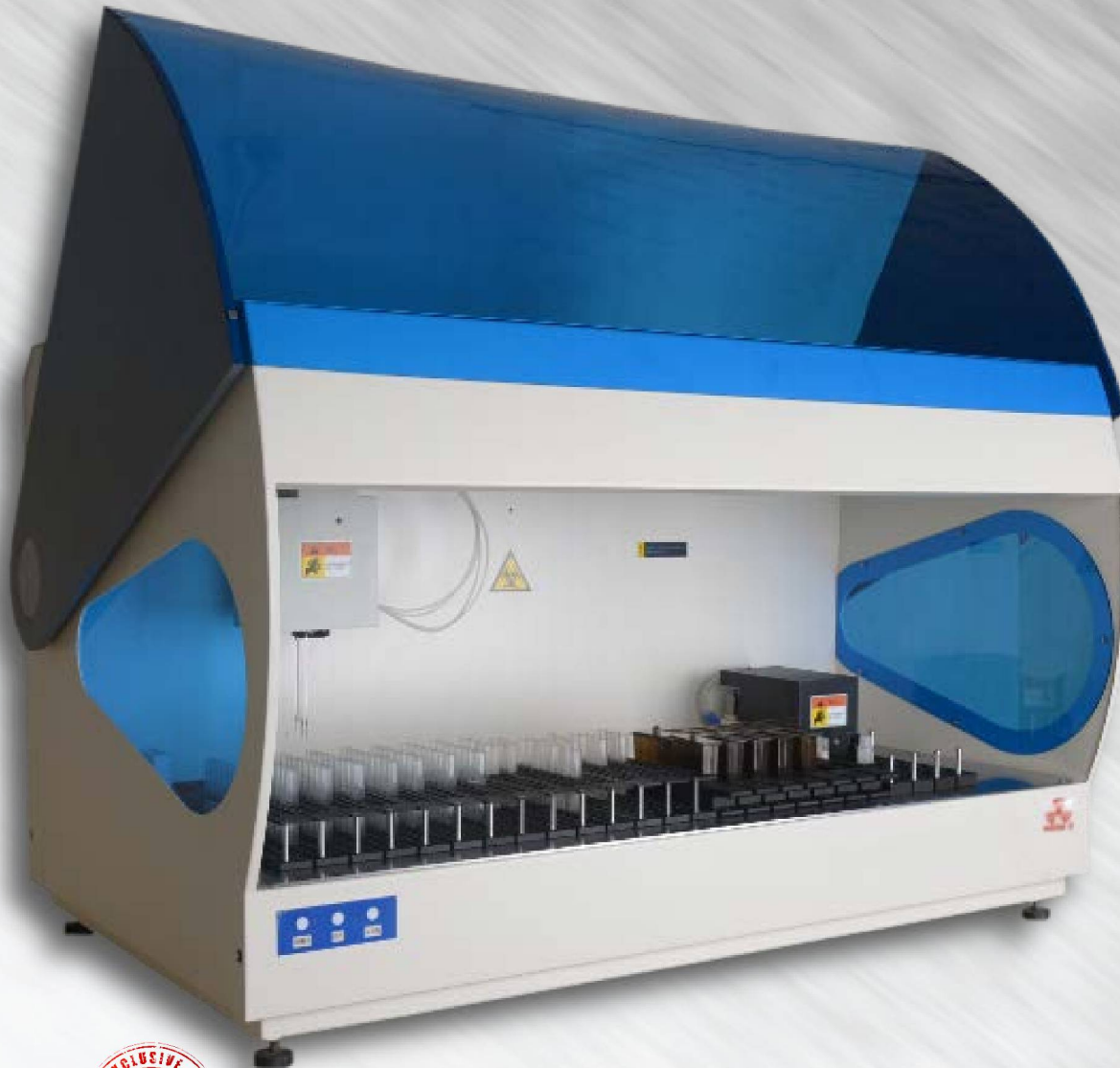




VEG-4000

Fully automated
ELISA processor



Pulse Healthcare Technology
House: 11/1, Shahid Minar Road
Kallyanpur, Dhaka-1216, Bangladesh.
Mobile: +8801708008061
e-mail: info@pht.com.bd
web: www.pht.com.bd

LABORATORY



VEG-4000

Fully automated ELISA processor

*with Washer
& Reader System*



Cod. VEG-4000

VEG-4000 Elisa Processors is fully automated Fourplate ELISA processing system, capable of sampling, incubation, washing and data processing. It is complete solution for your IVD ELISA assays. The system combines a high precision pipetting unit with stable incubators and efficiency washers and photometer unit.

VEG-2000 Modularity

- One X-Y-Z Intelligent mechanical arm.
- Maximum 552 sample positions.
- Maximum 46 reagent positions.
- All sample & reagent positions can be editable.
- Four pipetting probes, 1 μ L stepping, 1000 μ L
- Four units 96-well microplates.
- One modularized washer & reader units.
(microplate washing, data reading all automatically)



Sample Module

- With hydrophobic membrane treatment precision probe and automated washing system, ensuring adding volume accurately and preventing cross contamination effectively.
- Sample&Reagent&Dilution rack module using the original sample tube and reagent bottles directly, preventing effectively cross contamination.
- Onboard large capacity and optional programmable dilution model.
- Mechanical module elaborately designed, stable performance, spare part supplied, easy to maintenance.

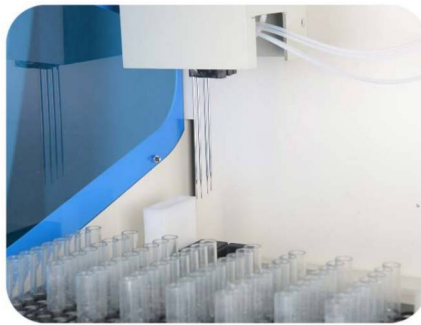
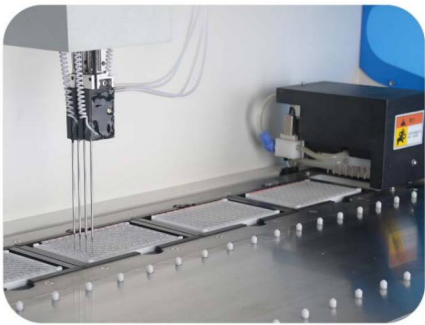


Washer

- 4 wash buffers at 2.0L, with level-sensing
- 10L with waste full sensor
- Two 8 nozzle manifolds, one to dispense and the other one to aspirate

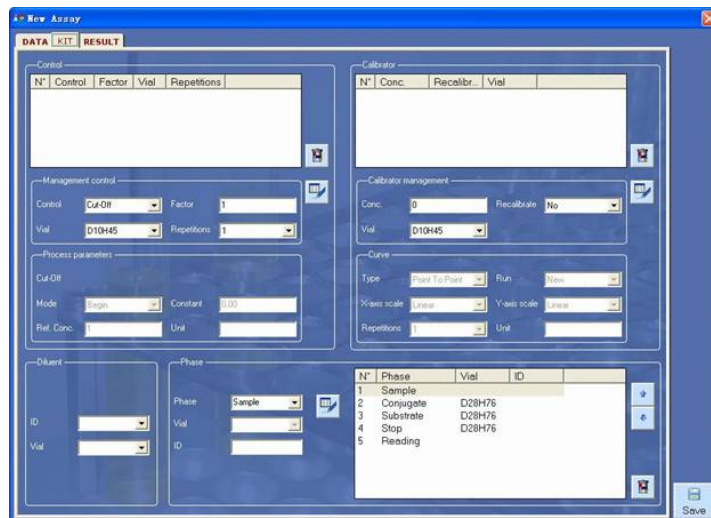
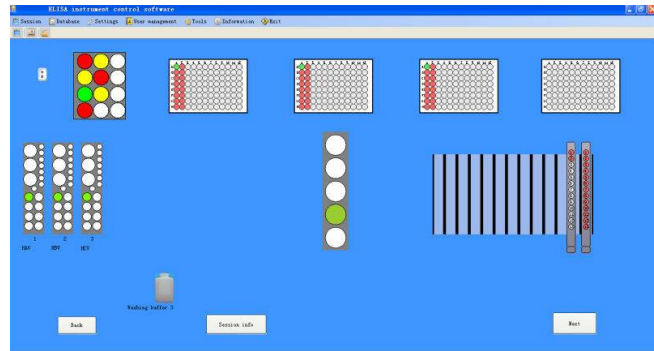
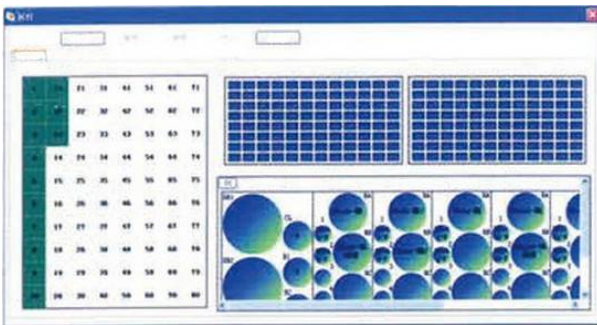
Reader

- 8 independent photometric channels with mono and bichromatic reading capability
- Photometric Range 0.000-3.000 OD
- Wavelength Range 400-700nm
- Optical Filters 2 precision filters (450 and 630nm);
2 more on request (4 filters max, 405 nm, 450nm, 492nm and 630nm)



User-friendly Software

LIS system available (laboratory information system)
Large data storage capacity. Professional service software
monitor process on line status.



Testing Range

- ✓ TORCH SERIES Toxo, RV, CMV, HSV etc...
- ✓ HEPATITIS SERIES HAV, HBV, HCV, HDV, HEV etc...
- ✓ VENERAL SERIES HIV, TP, MP, CT, etc...
- ✓ THYROID AUTOIMMUNITY SERIES T3, T4, FT3, TSH etc...
- ✓ ENDOCRINE SERIES E2, E3, LH, FSH, HCG, Pro, PRL etc...
- ✓ TUMOR MARKER SERIES CEA, AFP, PSA, F-PSA, CAL 9-9, CAL 255, CA15-30, CA 242.

TECHNICAL FEATURES

Model	VEG-4000	
Sample pipetting unit	Sample positions	Maximum 552 positions (23 rack, 24 positions/rack)
	Primary sample tubes	11.5-13mm
	Pipetting	8 μ L~1000 μ L, (10 μ L) CV<5%
	Time to dispense	8 minutes adding 96 samples
	Dispensing system	1 aspirating-dispensing probe with X-Y-Z movement; dilution system with a syringe of 1000 μ L, continuous flow washing station.
Reagent pipetting unit	Reagent racks	Maximum 46 positions (23 rack, 2 positions/rack)
	QC Position	24 positions/QC rack, at most 25 racks
	Pipetting pipetting precision	8~1000 μ L, 1 μ L stepping, (100 μ L) CV \leq 0.5%
	Time to dispense	2 minutes adding 96 reagents.
Washing unit	Programmable	Yes(options & parameters)
	Wash containers	4 wash buffers at 2.0L, with level-sensing
	Waste containers	10L with waste full sensor
	Washing system	two 8 nozzle manifolds, one to dispense and the other one to aspirate;
	Washing residual	<2 μ L
Reading unit	Reading system	8 independent photometric channels with mono and bi-chromatic reading capability
	Photometric range	0,000 ~3,000 OD
	Spectral range	400-700nm
	Optical filters	2 precision filters (450and 630nm); 2 more on request (4 filters max, 405, 450, 492 and 630 nm)
	Reading inaccuracy	Inaccuracy \pm 1% from 0.000 to 1.500 OD, \pm 2% from 1.500 to 3.000 OD
Incubation unit	Incubators	4 independent units
	Programmable	Yes
	Temperature range	RT to 45 $^{\circ}$ C
	Temperature accuracy	\pm 0.5 $^{\circ}$ C
Software unit	Adjustment step size	\pm 0.5 $^{\circ}$ C
	Software system	Windows 7/8/10 or above, LIS system available
	Function application	work list set up, patient reports and result filing; calibration curve storage for each carried out test
Physical Specification	Data reduction	cut-off (qualitative)
	Dimensions	1130 x 750 x 770mm (WxDxH)
	Power Supply	AC110/220V + 10%, 50/60Hz
	Weight	150kg
	Consumption	450W



Pulse Healthcare Technology
 House: 11/1, Shahid Minar Road
 Kallyanpur, Dhaka-1216, Bangladesh.
 Mobile: +8801708008061
 e-mail: info@pht.com.bd
 web: www.pht.com.bd



ESSE3 srl, Via Garibaldi 30
 14022 Castelnuovo D.B. (AT)
 Tel +39 011 99 27 706
 Fax +39 011 99 27 506
 e-mail esse3@chierinet.it
 web: www.esse3-medical.com

