



# VEG-2000

Fully automated  
ELISA processor



LABORATORY



**Pulse Healthcare Technology**

House: 11/1, Shahid Minar Road  
Kallyanpur, Dhaka-1216, Bangladesh.

Mobile: +8801708008061

e-mail: [info@pht.com.bd](mailto:info@pht.com.bd)

web: [www.pht.com.bd](http://www.pht.com.bd)



# VEG-2000

Fully automated ELISA processor



*with Washer  
& Reader System*



**Cod. VEG-2000**

**VEG-2000** Elisa Processors is fully automated Fourplate ELISA processing system, capable of sampling, incubation, washing and data processing. It is complete solution for your IVD ELISA assays. The system combines a high precision pipetting unit with stable incubators and efficiency washers and photometer unit.

## VEG-2000 Modularity

- One X-Y-Z Intelligent mechanical arm.
- Maximum 552 sample positions.
- Maximum 46 reagent positions.
- All sample & reagent positions can be editable.
- Two pi petting probes, 1 $\mu$ L stepping, 1000 $\mu$ L
- Four units 96-well microplates.
- One modularized washer & reader units.  
(microplate washing, data reading all automatically)



## Sample Module

- With hydrophobic membrane treatment precision probe and automated washing system, ensuring adding volume accurately and preventing cross contamination effectively.
- Sample&Reagent&Dilution rack module using the original sample tube and reagent bottles directly, preventing effectively cross contamination.
- Onboard large capacity and optional programmable dilution model.
- Mechanical module elaborately designed, stable performance, spare part supplied, easy to maintenance.

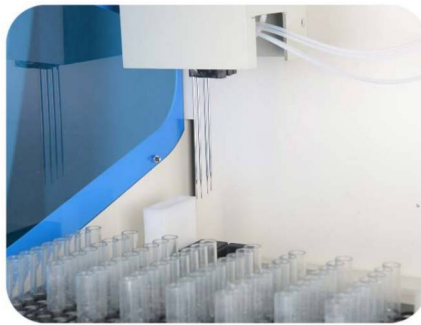
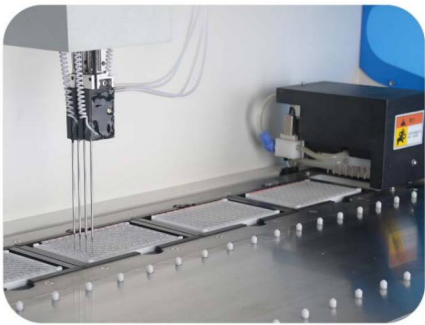


## Washer

- 4 wash buffers at 2.0L, with level-sensing
- 10L with waste full sensor
- Two 8 nozzle manifolds, one to dispense and the other one to aspirate

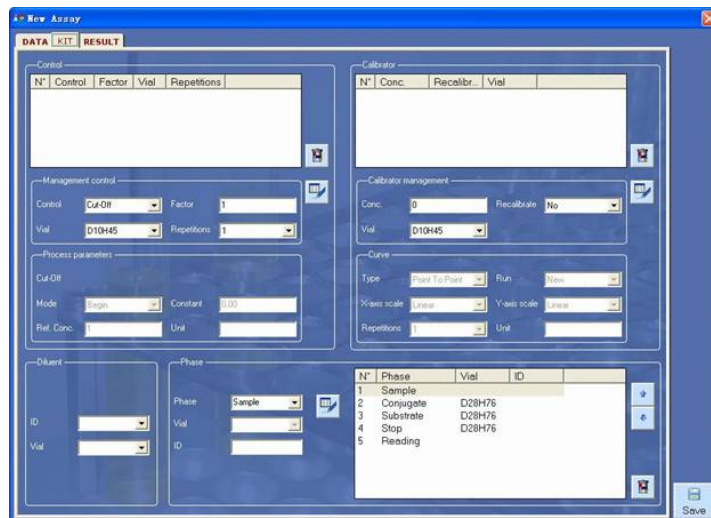
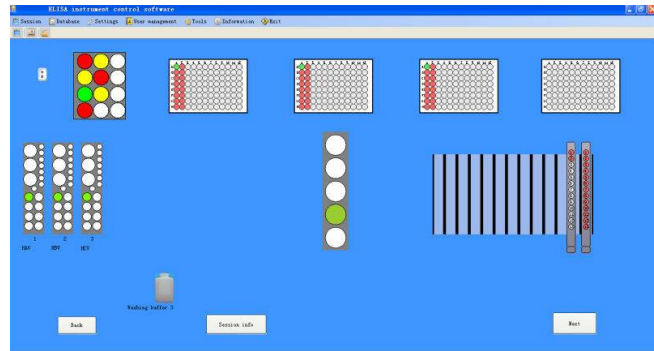
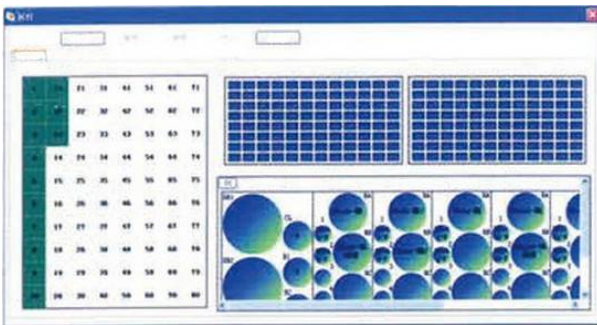
## Reader

- 8 independent photometric channels with mono and bichromatic reading capability
- Photometric Range 0.000-3.000 OD
- Wavelength Range 400-700nm
- Optical Filters 2 precision filters (450 and 630nm);  
2 more on request (4 filters max, 405 nm, 450nm, 492nm and 630nm)



## User-friendly Software

LIS system available (laboratory information system)  
Large data storage capacity. Professional service software  
monitor process on line status.



### Testing Range

- ✓ TORCH SERIES Toxo, RV, CMV, HSV etc...
- ✓ HEPATITIS SERIES HAV, HBV, HCV, HDV, HEV etc...
- ✓ VENERAL SERIES HIV, TP, MP, CT, etc...
- ✓ THYROID AUTOIMMUNITY SERIES T3, T4, FT3, TSH etc...
- ✓ ENDOCRINE SERIES E2, E3, LH, FSH, HCG, Pro, PRL etc...
- ✓ TUMOR MARKER SERIES CEA, AFP, PSA, F-PSA, CAL 9-9, CAL 25, CA 15-30, CA 242.

### TECHNICAL FEATURES

| Model                  | <b>VEG-2000</b>             |   |
|------------------------|-----------------------------|---|
| Sample pipetting unit  | <b>Sample positions</b>     | Maximum 552 positions (23 rack, 24 positions/rack)  |
|                        | <b>Primary sample tubes</b> | 11.5-13mm   |
|                        | <b>Pipetting</b>            | 8 $\mu$ L~1000 $\mu$ L, (10 $\mu$ L) CV<5%  |
|                        | <b>Time to dispense</b>     | 12 minutes adding 96 samples  |
|                        | <b>Dispensing system</b>    | 1 aspirating-dispensing probe with X-Y-Z movement; dilution system with a syringe of 1000 $\mu$ L, continuous flow washing station. |
| Reagent pipetting unit | <b>Reagent racks</b>        | Maximum 46 positions (23 rack, 2 positions/rack)  |
|                        | <b>QC Position</b>          | 24 positions/QC rack, at most 25 racks  |
|                        | <b>Pipetting</b>            | 8~1000 $\mu$ L, 1 $\mu$ L stepping,   |
|                        | <b>pipetting precision</b>  | (100 $\mu$ L) CV $\leq$ 0.5%  |
|                        | <b>Time to dispense</b>     | 3 minutes adding 96 reagents.   |
| Washing unit           | <b>Programmable</b>         | Yes(options & parameters)   |
|                        | <b>Wash containers</b>      | 4 wash buffers at 2.0L, with level-sensing  |
|                        | <b>Waste containers</b>     | 10L with waste full sensor  |
|                        | <b>Washing system</b>       | two 8 nozzle manifolds, one to dispense and the other one to aspirate;  |
|                        | <b>Washing residual</b>     | <2 $\mu$ L  |
| Reading unit           | <b>Reading system</b>       | 8 independent photometric channels with mono and bi-chromatic reading capability  |
|                        | <b>Photometric range</b>    | 0.000 ~3.000 OD   |
|                        | <b>Spectral range</b>       | 400-700nm   |
|                        | <b>Optical filters</b>      | 2 precision filters (450and 630nm);<br>2 more on request (4 filters max, 405, 450, 492 and 630 nm)                                  |
|                        | <b>Reading inaccuracy</b>   | Inaccuracy $\pm$ 1% from 0.000 to 1.500 OD,<br>$\pm$ 2% from 1.500 to 3.000 OD  |
| Incubation unit        | <b>Incubators</b>           | 4 independent units   |
|                        | <b>Programmable</b>         | Yes   |
|                        | <b>Temperature range</b>    | RT to 45 $^{\circ}$ C   |
|                        | <b>Temperature accuracy</b> | $\pm$ 0.5 $^{\circ}$ C  |
|                        | <b>Adjustment step size</b> | $\pm$ 0.5 $^{\circ}$ C  |
| Software unit          | <b>Software system</b>      | Windows 7/8/10 or above, LIS system available   |
|                        | <b>Function application</b> | work list set up, patient reports and result filing;<br>calibration curve storage for each carried out test                         |
|                        | <b>Data reduction</b>       | cut-off (qualitative)   |
| Physical Specification | <b>Dimensions</b>           | 1130 x 750 x 770mm (WxDxH)  |
|                        | <b>Power Supply</b>         | AC110/220V + 10%, 50/60Hz   |
|                        | <b>Weight</b>               | 150kg   |
|                        | <b>Consumption</b>          | 450W  |



**Pulse Healthcare Technology**  
 House: 11/1, Shahid Minar Road  
 Kallyanpur, Dhaka-1216, Bangladesh.  
 Mobile: +8801708008061  
 e-mail: [info@pht.com.bd](mailto:info@pht.com.bd)  
 web: [www.pht.com.bd](http://www.pht.com.bd)



**ESSE3** srl, Via Garibaldi 30  
 14022 Castelnuovo D.B. (AT)  
 Tel +39 011 99 27 706  
 Fax +39 011 99 27 506  
 e-mail [esse3@chierinet.it](mailto:esse3@chierinet.it)  
 web: [www.esse3-medical.com](http://www.esse3-medical.com)

